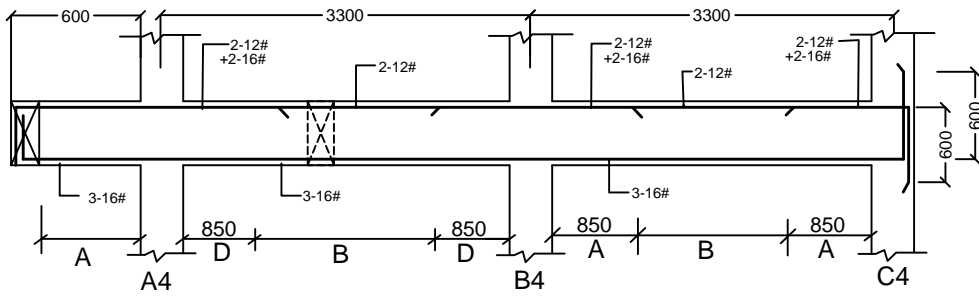
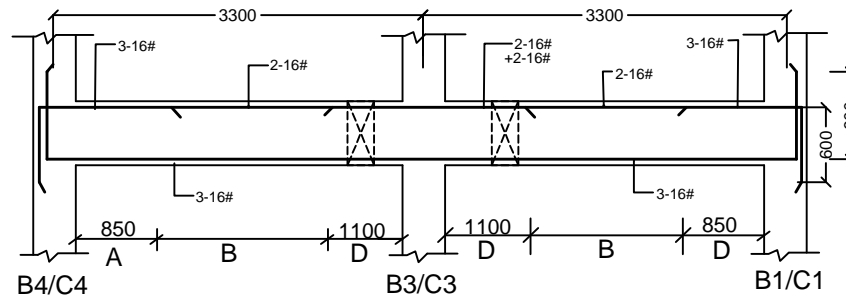


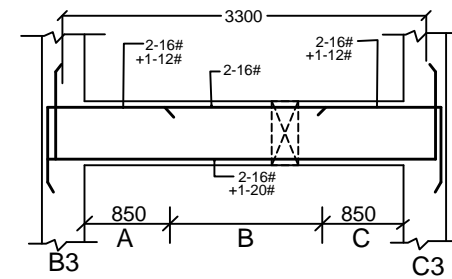
P. BEAM- A4,B4,C4  
BEAM SIZE-250X350



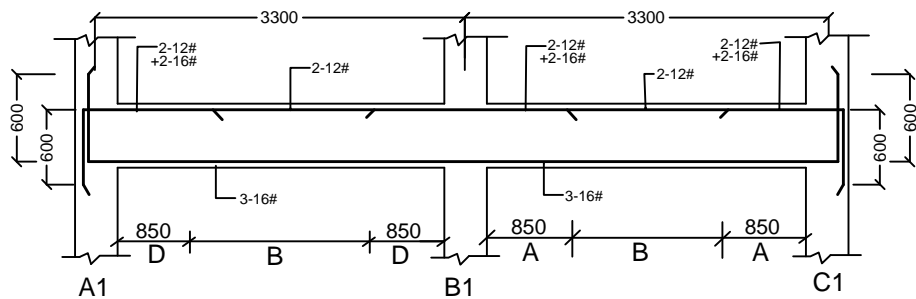
P. BEAM- B4,B3,B1 / C4,C3,C1  
BEAM SIZE-250X350



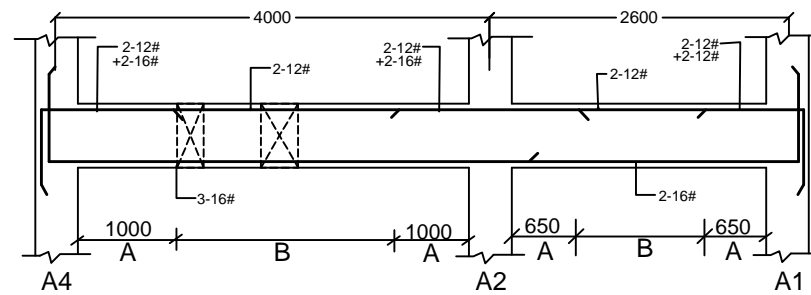
P. BEAM- B3,C3  
BEAM SIZE-250X350



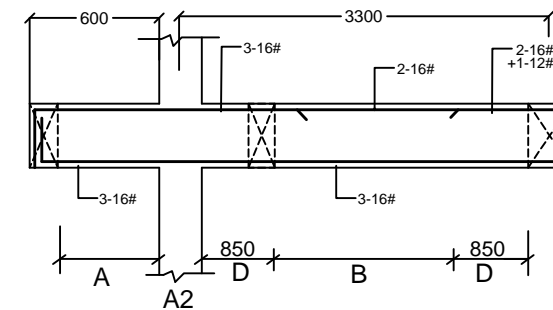
P. BEAM- A1,B1,C1  
BEAM SIZE-250X350



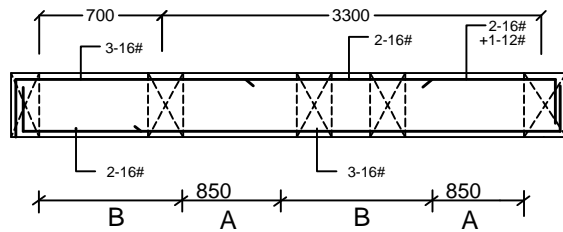
P. BEAM- A4,A2,A1  
BEAM SIZE-250X350



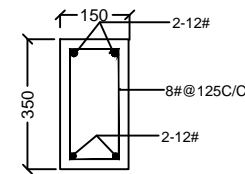
P. BEAM- A2  
BEAM SIZE-250X350



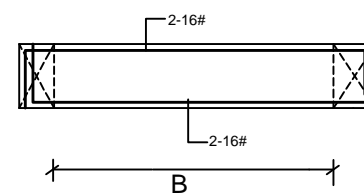
P.B.-1  
BEAM SIZE-250X350



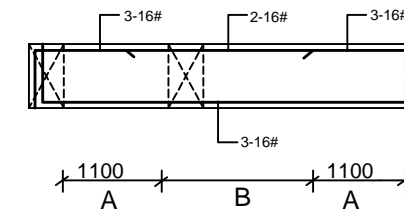
P.B.-2  
BEAM SIZE -150X350



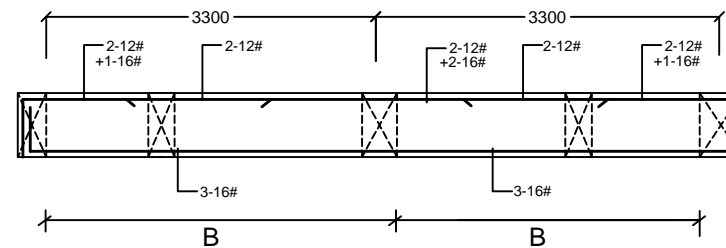
P.B.-3  
BEAM SIZE-250X350



P.B.-4  
BEAM SIZE-250X350

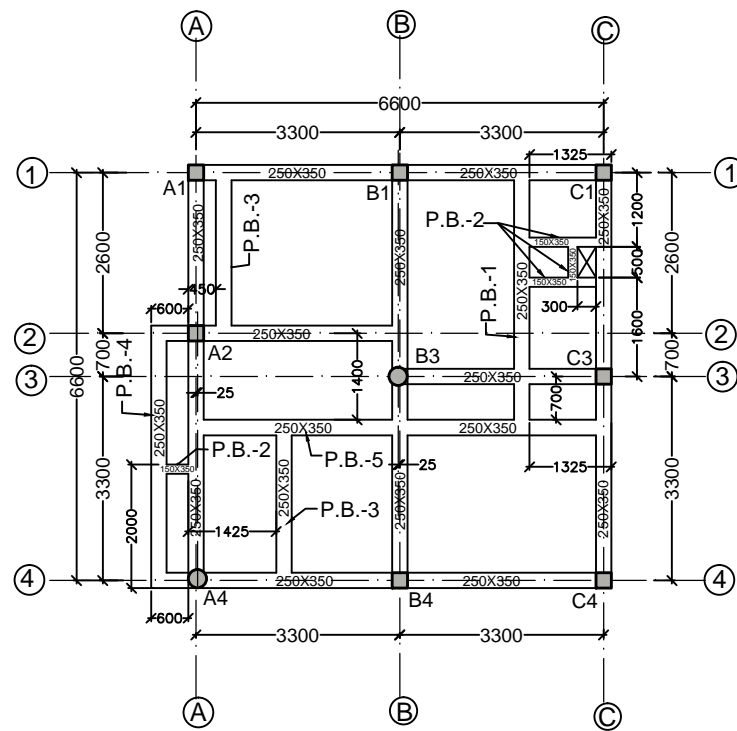


P.B.-5  
BEAM SIZE-250X350

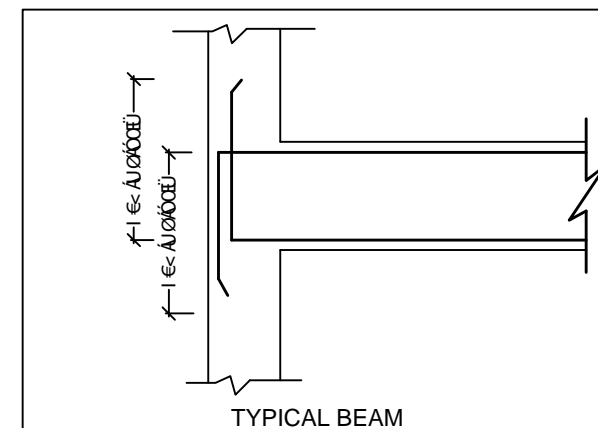


2 LEGGED STIRRUP:

- A = 8#@100C/C
- B = 8#@125C/C
- C = 8#@150C/C
- D = 8#@75C/C



LAYOUT OF PLINTH BEAM



TYPICAL BEAM

THIS DRAWING IS A COPYRIGHT.  
CONTENTS OF THE DRAWING OR PART THEREOF  
MAY NOT BE USED OR REPRODUCED WITHOUT  
THE PERMISSION OF RAJKHOWAS AARCHI  
CHANDMARI, GUWAHATI.

NOTES

1. ALL DIMENSIONS ARE IN M.M UNLESS OTHERWISE SPECIFIED.
2. GRADE OF CONCRETE MIX SHALL BE M20 (1:1½:3) CONFORMING TO IS-456-2000. UNLESS OTHERWISE NOTED.
3. # INDICATES HYSD BARS OF GRADE FE-415 CONFORMING TO IS: 1786-1985.
4. # INDICATES HYSD BARS OF GRADE FE-415 CONFORMING TO IS-432-1960.
5. CLEAR COVER TO REINFORCEMENT:  
BEAM = 25MM.  
COLUMN = 40MM.  
SLAB = 19MM.
6. DEVELOPMENT LENGTHS (IN MM.)  
Sd <math>= 1.25 \times d \times \frac{f\_y}{\sigma\_s}</math>  
Sd <math>= 1.25 \times d \times \frac{f\_y}{\sigma\_s}</math>  
<math>= 1.25 \times d \times \frac{f\_y}{\sigma\_s}</math>
7. THIS DRAWING SHOULD BE READ IN CONJUNCTION WITH ALL OTHER ARCHITECTURAL AND STRUCTURAL DRAWINGS.
8. RE-INFORCEMENT DETAIL IN COLUMN AS PER IS-456-2000 & IS-13920

S.NO.	REVISIONS	DATE

REVISIONS

CLIENT

BRAHMAPUTRA CRACKER AND  
POLYMER LTD.

PROJECT

CONSTRUCTION OF SECURITY  
OFFICE FOR BCPL TOWNSHIP  
AT LEPETKATA, DIBRUGARH.

SCALE :	JOB NO	10 /GU / 2008
	DEALT BY	ILA
	CHECKED BY	

CLIENT'S SIGN

ARCHITECT'S SIGN

CONSULTANT

ARCHITECTS, ENGINEERS,  
VALUERS & PLANNERS  
M.D. ROAD, CHANDMARI  
GUWAHATI-781003



DRAWING TITLE

LAYOUT & DETAILS OF PLINTH BEAM  
( SECURITY OFFICE )

DRAWING NO.  
RAA/BCPL/SECURITY OFFICE/T/ST-02